

Honeywell

THE POWER OF **CONNECTED**

Basic, Toggle, and Rocker Switches

Product Range Guide



For innovation that's well apart, there's only Honeywell

With more than 50,000 products ranging from snap-action, limit, toggle, and pressure switches to position, speed, pressure, and airflow sensors, Honeywell has one of the broadest sensing and switching portfolios.

Honeywell sensor, switch, and control components are tailored to exact specifications for stronger performance, longer productivity, and increased safety. Enhanced accuracy and durability are built into every part, improving output and endurance. For our customers, this can reduce expenditures and operational costs. Our global footprint and channels help to competitively price such components for your chosen application and provide immediate technical support.

While Honeywell's switch and sensor solutions are suitable for a wide array of basic and complex applications, our custom-engineered solutions offer enhanced precision, repeatability, and ruggedness. We offer domain knowledge and technology resources, along with a close working relationship, to develop and deliver cost-effective, individually tailored solutions. Whether clean-slate development or simple modifications to an existing design are needed, our expertly engineered solutions help to meet the most stringent requirements with world-class product designs, technology integration, and customer-specific manufacturing.

Global service, sourcing, and manufacturing. Industry-leading engineers. Value-added assemblies and solutions. A one-stop, full-service, globally competitive supplier.



Table of Contents

Premium and Standard V-Series Switches	3	Lit and Unlit Pushbuttons.....	9
Premium and Standard Miniature and Subminiature Switches ..	4-5	Sealed and Standard Toggles and Rockers.....	10-11
Premium Large Switches and Accessories	6-7	Honeywell Core Industry Segments.....	12-13
Sealed Switches.....	8	Honeywell Product Portfolio	14-15

MICRO SWITCH Basic Series | Premium & Standard V-Series Switches

Simple or precision on/off, end of limit, presence/absence, pressure, temperature, and manual operator interface application needs. Potential uses include a variety of applications, including business equipment, valves, manually operated devices, vending machines, water heaters, appliances, and industrial controls.



Series	V7	V15	V15W Watertight	V15W2 Explosion-Proof
Type	premium	standard	watertight	zone 2 hazardous area rated
Amp rating	0.1 A to 25 A	5 A to 26 A	0.1 A, 5 A, 10 A	5 A, 1/10 HP @ 125 Vac/250 Vac
Circuitry	SPDT, SPNO, SPNC	SPDT, SPNO, SPNC	SPDT, SPNO, SPNC	SPDT, SPNO, SPNC
Operating force	0.7 oz max. to 14.6 oz max.	US: ≥ 100 g (16 A to 26 A) AP: 15 g to 400 g (5 A to 26 A)	15 g, 25 g, 50 g, 100 g, 200 g	100 g, 200 g
Terminations	quick connect, pc board, pcb straight angle left	quick connect, screw, solder, RAST 5 & 7	prelead; terminals: 4,8 mm x 0,8 mm or 4,8 mm x 0,5 mm	quick connect: 4,8 mm x 0,5 mm
Actuators/levers	pin plunger, straight, roller, sim. roller	pin plunger, straight, roller, sim. roller	pin plunger, straight, roller, sim. roller	pin plunger, roller plunger; other actuators/levers available for special order
Voltage	125 Vac, 250 Vac, 277 Vac	125 Vac, 250 Vac	125 Vac, 250 Vac, 30 Vdc, 48 Vdc	125 Vac, 250 Vac
Approvals	UL, CSA, ENEC	UL, cUL, ENEC, CQC	UL, cUL, ENEC, CQC	UL, cUL, ENEC, CQC, IEC Ex
Operating temperature range	-40°C to 150°C [-40°F to 302°F]	-25°C to 150°C [-13°F to 300°F]	-40°C to 85°C [-40°F to 185°F]	-25 °C to 85 °C [-13 °F to 185 °F]
Contacts	silver, silver cadmium oxide, gold	silver, silver cadmium oxide, gold-plated silver	silver nickel, gold-plated option	silver alloy, gold-plated thermal alloy
Housing material	PCT polyester thermo-plastic	PBT polyester thermo-plastic	PBT polyester thermo-plastic	PBT polyester thermo-plastic
Measurements	15,9 mm H x 10,2 mm W x 28,8 mm L [0.63 in H x 0.4 in W x 1.14 in L]	15,9 mm H x 10,3 mm W x 27,8 mm L [0.63 in H x 0.41 in W x 1.09 in L]	15,9 mm H x 10,3 mm W x 33 mm L [0.63 in H x 0.41 in W x 1.3 in L]	15,9 mm H x 10,3 mm W x 33 mm L [0.63 in H x 0.41 in W x 1.3 in L]
Features	extended mechanical and electrical life; wide temperature range; custom engineered solutions	broad range of electrical loads; wide temperature range; limited configuration options available	designed for harsh-duty, wash down areas; high sealing capability with an IP67 rating (pre-lead only)	approved for use in Zone 2 hazardous locations with an IP67 rating (pre-lead only)

Designed for high precision, presence and absence detection, where physical contact with an object is permissible and in simple on-and-off actions. These compact, highly reliable and rugged switches are used in potential applications including aerospace, HVAC, instrumentation, office equipment, medical/dental, valves, and vending machines.



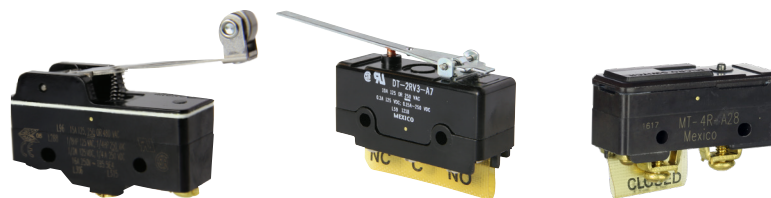
Series	SM	SX
Type	premium	premium
Amp rating	0.1 A to 11 A	1 A to 7 A
Circuitry	SPDT	SPDT, SPNO
Operating force	0.04 oz to 2 oz	0.71 oz to 6 oz
Terminations	quick connect, solder, pcb	quick connect, solder, pcb
Actuators/levers	pin plunger, straight, roller, sim. roller, paddle	pin plunger, straight, roller, sim. roller, offset flag, crossed roller
Voltage	115 Vac, 125 Vac, 250 Vac, 30 Vdc	125 Vac, 250 Vac, 28 Vdc
Approvals	UL, CSA, ENEC, CE	UL, CSA, ENEC, CE
Operating temperature range	-55°C to 121°C [-67°F to 250°F] high temperature options to 204°C [400°F]	-55°C to 121°C [-67°F to 250°F] high temperature options to 204°C [400°F]
Contacts	silver, gold	silver, gold
Housing material	phenolic	phenolic
Measurements	12,7 mm H x 6,35 mm W x 20,3 mm L [0.5 in H x 0.25 in W x 0.8 in L]	12,7 mm H x 6,35 mm W x 20,3 mm L [0.5 in H x 0.25 in W x 0.8 in L]
Features	extended operating life; elongated mounting holes; MIL-PRF-8805 qualified listings available	extended operating life; elongated mounting holes; MIL-PRF-8805 qualified listings available



ZD	ZM	ZM1	ZW	ZX	
standard	standard (coil internal spring)	standard (flat internal spring)	standard	standard	Type
0.1 A, 3 A	0.1 A, 5 A, 10.1 A	0.1 A, 3 A, 6 A, 10.1 A, 16 A	0.1 A, 6 A	0.1 A, 3 A	Amp rating
SPDT	SPST, SPDT, SPNO	SPDT, SPNO, SPNC	SPDT, SPNO, SPNC	SPDT	Circuitry
130 gf to 195 gf	0.18 oz to 8.78 oz	12 gf to 355 gf	1.94 oz to 7.16 oz	0.53 oz to 5.3 oz	Operating force
solder, pcb straight, pcb left angle, pcb right angle, pre-wired	quick connect, solder, pcb	quick connect, solder, pcb	quick connect, solder, cable bottom/end, cable side exit	solder, pcb snap-in, pcb left angle, pcb right angle	Terminations
pin plunger, straight, sim. roller	pin plunger, straight, roller, sim. roller, L-shaped	pin plunger, straight, roller, sim. roller, L-shaped	pin plunger, straight, roller, sim. roller	pin plunger, straight, sim. roller, special	Actuators/levers
125 Vac, 12 Vdc	125 Vac, 250 Vac, 30 Vdc	125 Vac, 250 Vac	125 Vac, 250 Vac	125 Vac, 48 Vdc	Voltage
UL, cUL, CE, ENEC	UL, CSA, CE	UL, cUL, ENEC	UL, cUL, CE, ENEC	UL, CSA	Approvals
-40°C to 85°C [-40°F to 185°F]	-40°C to 120°C [-40°F to 248°F]	-40°C to 125°C [-40°F to 257°F]	-25°C to 70°C [-13°F to 158°F] (with wires) -25°C to 120°C [-13°F to 248°F] (without wires)	-40°C to 65°C [-40°F to 149°F]	Operating temperature range
silver, gold-plated silver	silver, gold-plated silver, silver-tin-indium oxide	silver, gold-plated silver, gold-plated brass, silver-tin-indium oxide	silver, gold-plated silver	silver, gold-plated silver	Contacts
PBT polyester	polyamide (nylon)	polyamide (nylon)	PBT (polyester)	polyamide (nylon)	Housing material
10,6 mm H x 6,35 mm W x 19,8 mm L [0.42 in H x 0.25 in W x 0.78 in L]	10,6 mm H x 6,4 mm W x 19,8 mm L [0.42 in H x 0.25 in W x 0.78 in L]	10,6 mm H x 6,4 mm W x 19,8 mm L [0.42 in H x 0.25 in W x 0.78 in L]	9,0 mm H x 6,4 mm W x 19,8 mm L [0.36 in H x 0.25 in W x 0.78 in L]	6,5 mm H x 5,7 mm W x 12,7 mm L [0.26 in H x 0.22 in W x 0.50 in L]	Measurements
low energy or power-duty electrical ratings; gold-plated or silver contacts; PBT polyester housing material	low energy or power-duty electrical ratings; gold-plated or silver contacts	low energy or power-duty electrical ratings; gold-plated or silver contacts	IP67 available; low energy or power-duty electrical ratings; gold-plated or silver contacts; PBT polyester housing material	low energy or power-duty electrical ratings; gold-plated or silver contacts; polybutylene terephthalate housing	Features

MICRO SWITCH Basic Series | Large Switches and Accessories

Often ideal for high cost-of-failure applications. Low operating force and differential travel. Current ratings from 10 A to 25 A. Designed to withstand 100K operations at full load or 10M for mechanical life. Have been used in a variety of applications including irrigation, transportation, medical/dental, valves, office equipment, presses, machine tools, and HVAC.



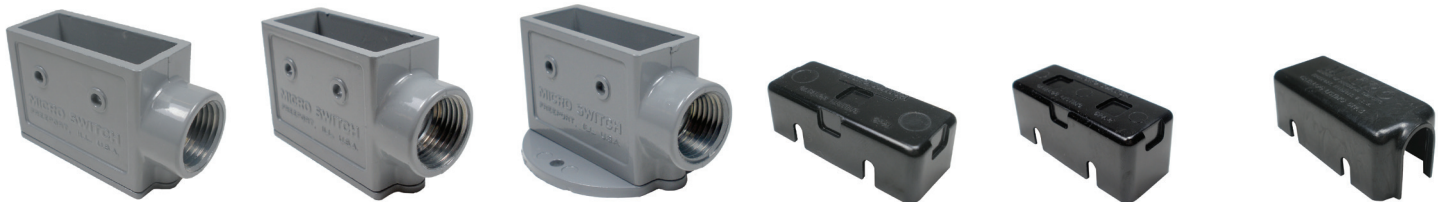
Series	BZ/BA/BM/BE	DT	MT
Type	premium	premium	premium
Amp rating	15 A (BZ), 22 A (BM), 20 A (BA), 25 A (BE)	10 A	10 A
Circuitry	SPDT	DPDT	SPDT
Operating force	1.0 oz to 28 oz	7.0 oz to 10.0 oz	2.0 oz to 18 oz
Terminations	quick connect, solder, screw	screw	screw
Actuators/levers	pin plunger, overtravel plunger, straight, roller, flexible roller leaf, flexible leaf	pin plunger, straight, roller	pin plunger, straight, roller
Voltage	115 Vac, 125 Vac, 250 Vac	250 Vac, 28 Vdc	125 Vac, 125 Vdc
Approvals	UL, CSA, ENEC, CE (varies by model)	UL, CSA	UL, CSA
Operating temp. range	-55°C to 85°C [-67°F to 185°F] 121°C [250°F] and 204°C [400°F] options available	-55°C to 85°C [-67°F to 185°F]	-55°C to 82°C [-67°F to 180°F]
Contacts	silver, silver cadmium oxide	silver	silver
Housing material	general purpose phenolic	general purpose phenolic	arc resistant melamine
Measurements	25,4 mm H x 17,8 mm W x 50,8 mm L [1.0 in H x 0.7 in W x 2.0 in L]	25,4 mm H x 17,8 mm W x 50,8 mm L [1.0 in H x 0.7 in W x 2.0 in L]	25,4 mm H x 17,8 mm W x 50,8 mm L [1.0 in H x 0.7 in W x 2.0 in L]
Features	worldwide standard "large basic" switch; low operating force and travel; extended mechanical life; momentary or maintained actions	mounting interchangeability with BZ Series switches; permits several wiring combinations	mounting interchangeability with BZ/BA Series switches; arc-extinguishing design in contact area; arc-resistant case



Series	8MA1	8MA2	17MA1-B
Type	adjustable mounting bracket	adjustable mounting bracket	conversion mounting bracket
Description	adjustment slot on the left	adjustment slot on the right	-
Housing material	steel	steel	corrosion-resistant metal
Measurements	60,2 mm W x 21,3 mm H x 7,4 mm D [2.37 in W x 0.84 in H x 0.29 in D]	60,2 mm W x 21,3 mm H x 7,4 mm D [2.37 in W x 0.84 in H x 0.29 in D]	66,8 mm W x 19,0 mm D [2.63 in W x 0.75 in D]
Features	sturdy plated steel construction; fast, easy screwdriver adjustment; can be used with all standard basic switches		converts standard basic switches from side to top mount; snaps into mounting holes without tools



3MN	6AS	AC	DM	Type
premium	premium	special application	special application	
15 A	10 A, 15 A, 20 A	5 A to 25 A	10 A, 16 A	Amp rating
two circuit, double break (2 CKT DB)	SPDT	SPDT	SPDT, DPDT	Circuitry
7.0 oz to 20 oz	8 oz to 14 oz	–	4,17 N [15 oz] max.	Operating force
screw	solder, screw, A2, T	turret-solder, screw, flying leads	quick connect	Terminations
pin plunger	straight, roller, leaf	rod	bullet nose, concave, pull-to-heat plungers	Actuators/levers
480 Vac	125 Vac, 250 Vac, 480 Vac	125 Vac, 250 Vac, 480 Vac, 30 Vdc	125 Vac, 250 Vac, 277 Vac	Voltage
UL, CSA	UL	UL versions available	UL, CSA	Approvals
-55°C to 85°C [-67°F to 185°F]	-55°C to 85°C [-67°F to 185°F]	-54°C to 121°C [-65°F to 250°F]	-37°C to 82°C [-35°F to 180°F]	Operating temp. range
silver	silver	silver	silver	Contacts
general purpose phenolic	general purpose phenolic	die-cast stainless steel bracket, stainless steel or polyester rod	polyester	Housing material
25,4 mm H x 17,8 mm W x 50,8 mm L [1.0 in H x 0.7 in W x 2.0 in L]	20,1 mm H x 35,1 mm W x 49,3 mm L [0.79 in H x 1.38 in W x 1.94 in L]	varies by model	48,8 mm H x 31,8 mm W x 14,0 mm D [1.93 in H x 1.25 in W x 0.55 in D]	Measurements
double-break circuitry; extended mechanical life; space between terminals reduces possibility of shorting; arc-resistant plastic	tandem switch assembly; field adjustable operating point on one or both basic switches	cuts power when door/drawer is opened; momentary, maintained, or pull-to-heat actuation; one or two SPDT switches	easy installation; momentary, alternate push-pull, or pull-to-heat operation; expected mechanical life: 1 million operations	Features



3PA1	3PA28	3PA2	5PA1	5PA2	5PA3	Type
die-cast zinc enclosure (side mount)	die-cast zinc enclosure (side mount)	die-cast zinc enclosure (flange mount)	plastic terminal enclosure	plastic terminal enclosure	plastic terminal enclosure	
mounted from either side through 3,55 mm [0.140 in] dia. holes on 25,4 mm [1.0 in] centers	mounted from either side through 3,55 mm [0.140 in] dia. holes on 25,4 mm [1.0 in] centers. 1/2-14 NPSM internal thread conduit hub	switch secured in enclosure; two 4,37 mm [0.172 in] dia. holes in flange accept #8 screws for mounting on 41,3 mm [1.625 in] centers	used with solder terminal switches	use with screw terminal switches	used with either solder or screw terminal switches with auxiliary actuators assembled	Description
die-cast zinc	die-cast zinc	die-cast zinc	plastic	plastic	plastic	Housing material
74,8 mm W x 42,9 mm H x 25,4 mm D [2.95 in W x 1.69 in H x 1.00 in D]	74,8 mm W x 42,9 mm H x 25,4 mm D [2.95 in W x 1.69 in H x 1.00 in D]	74,8 mm W x 42,9 mm H x 25,4 mm D [2.95 in W x 1.69 in H x 1.00 in D]	52,8 mm W x 16,1 mm H [2.08 in W x 0.64 in H]	52,8 mm W x 20,2 mm H x 21,0 mm D [2.08 in W x 0.80 in H x 0.83 in D]	52,8 mm W x 20,2 mm H x 21,0 mm D [2.08 in W x 0.80 in H x 0.83 in D]	Measurements
protects the switch from physical abuse and personnel from contact with exposed terminals			easy to use; screw and solder terminal versions; protect personnel from contact with exposed terminals			Features

MICRO SWITCH Basic Series | Sealed Switches

Sealed switches are snap-action precision switches enclosed within a corrosion-resistant housing that seals the switch contacts from contamination. These sealed switches have often been used in aerospace, ordnance, industrial, marine, and transportation applications.



Series	SE/XE	HM
Type	anodized aluminum	stainless steel
Sealing	MIL-PRF-8805, symbol 3, watertight	MIL-PRF-8805, symbol 5, hermetic
Operating temperature range	-53°C to 105°C [-65°F to 221°F]	-65°C to 121°C [-85°F to 250°F] high temp available: 500°F
Actuators/levers	auxiliary actuators available	integral lever; aux. actuators: leaf, roller leaf, straight, roller lever
Termination	solder, leadwire	solder, leadwire
Circuitry	SPDT	SPDT
Contacts	silver, gold, bifurcated gold	silver, gold, bifurcated gold
Amp rating	0.5 A to 7 A	0.5 A to 3 A
Approvals	CE, UL/CSA, MIL-PRF-8805 (selected listings)	MIL-PRF-8805 (select listings qualified)
Measurements	SE: 19,05 mm H x 8,64 mm W x 22,35 mm L [0.75 in H x 0.34 in W x 0.88 in L] XE: 19,05 mm H x 8,13 mm W x 15,75 mm L [0.75 in H x 0.32 in W x 0.62 in L]	12,7 mm H x 6,35 mm W x 20,3 mm L [0.5 in H x 0.25 in W x 0.8 in L]
Features	watertight and military standard construction per MIL-PRF-8805; corrosion-resistant aluminum housing	hermetically sealed per MIL-PRF-8805; high temperature construction; reduced sensitivity to changes in altitude or pressure



Series	HS
Type	stainless steel, phenolic
Sealing	MIL-PRF-8805, symbol 5, hermetic
Operating temperature	-54°C to 121°C [-65°F to 250°F]
Actuators/levers	integral lever
Termination	screw, leadwire
Circuitry	SPDT
Contacts	silver
Amp rating	1 A to 25 A
Approvals	UL, CSA, MIL-PRF-8805 (select listings qualified)
Measurements	25,4 mm H x 17,8 mm W x 50,8 mm L [1.0 in H x 0.7 in W x 2.0 in L]
Features	hermetically sealed per MIL-PRF-8805; high temperature construction; reduced sensitivity to changes in altitude or pressure



MICRO SWITCH Pushbutton Switches | Lit and Unlit Pushbuttons

Lighted or unlighted, pushbuttons are designed to enhance manual operation with a flexible and attractive interface. Snap-in surface products are easy to apply, operate, and maintain.

Potential applications include control boards and panels found in industrial machinery, instrumentation, flight decks, and test equipment.



Series	PB
Panel area	20,32 mm x 35,56 mm [0.8 in x 1.4 in] max. (behind panel)
Display	8,1 mm [0.32 in] and other button sizes
Colored buttons	available
Mounting	threaded bushing
Termination	solder, H58, quick connect
Sealing	panel-sealed and hermetic-sealed switches available
Electrical	0.5 A to 5 A; 125/250 Vac, 28 Vdc
Approvals	UL, CSA, some meet MIL-PRF-8805/23
Features	up to four poles - double throw; compact size



Series	AML	MML
Panel area	20,5 mm [0.80 in] square; 20,5 mm x 30,5 mm [0.80 in x 1.20 in] rectangular	15 mm x 9,9 mm [0.59 in x 0.39 in] rectangular; 17,8 mm x 12,7 mm [0.70 in x 0.50 in] rectangular; 9,9 mm [0.39 in] square
Display	15,0 mm [0.59 in] square; 15 mm x 25 mm [0.59 in x 0.99 in] buttons	13 mm x 6,6 mm [0.51 in x 0.26 in] rectangular; 6,8 mm [0.27 in] square
Illumination	incandescent T-1-3/4 lamps – 6 V, 14 V, 28 V; LEDs – 2 V, 4 V, 5 V, 10 V, 15 V; neon lamps – 125 V, 250 V	T-1 – 5 V, 28 V; incandescent T-1-3/4 LEDs – 2 V, 2.5 V, 3 V
Behind panel	43,1 mm [1.7 in]	17,0 mm [0.67 in]
Mounting	snap-in individual, strip, matrix, sub-panel, pcb	snap-in individual, strip, sub-panel, pcb, bezel
Termination	solder, quick connect, pc board, push-on	solder, quick connect, printed wiring board
Sealing	optional panel seal	–
Electrical	electronic control: up to 3 A, 125 Vac	silver contacts: up to 1 A, 125 Vac; 6 A @ 125 Vac, 250 Vac; 2 A @ 30 Vdc; 1 A @ 125 Vdc; 1/10 hp @ 125 Vac; gold contacts: up to 0.25 A, 30 Vdc; UL rating 0.10 A
Approvals	UL, CSA, VDE, CE (selected products)	UL, CSA
Features	silver or gold contacts; full guard bezel option; lamp circuit independent of switch circuit	silver or gold contacts; pwb or panel-mount switches; multi-unit strip mounting available

MICRO SWITCH Toggle & Rocker Switches | Sealed & Standard Toggles and P

Hermetic and environmentally sealed toggle switches offer enhanced reliability with MICRO SWITCH technology. Can be used in a variety of applications where a panel-mount switch with an environment-proof rating is needed, including industrial equipment, military and commercial aviation, agriculture, process control, and medical.



Series	AT	TS	TW
Type	stainless steel toggle	stainless steel, phenolic toggle	miniature stainless steel toggle
Sealing	MIL-PRF-8805/26/98	–	qualified to MIL-DTL-83781
Operating temp.	various	-54°C to 71°C [-65°F to 160°F]	-65°C to 71°C [-85°F to 160°F]
Actuator/lever	standard, locking, tab, special design	standard	standard, locking, special design, tab
Action	2-position, momentary & main-tained	2- or 3-position, momentary & maintained	2- or 3-position, momentary & maintained
Mounting	15/32 in bushing, 1/4 in bushing, 3-hole, above panel	15/32 in bushing	bushing 15/32 in or 1/4 in
Termination	solder, solder T2, screw, quick connect, leadwire, H58	solder, screw, quick connect	IWTS, solder, screw, quick connect, H58, T2
Circuitry	SPDT, DPDT, DPNO, 3PDT, 4PDT, 6PDT, 8PDT, 10PDT	SPDT, DPDT	SPST, SPDT, DPST, DPDT
Contacts	silver, gold, bifurcated gold	silver tin oxide and indium oxide	fine silver, gold-plated
Amp rating	0.01 A to 5 A (resistive)	0.4 A to 10 A @ 126 Vac to 277 Vac 0.4 A to 20 A @ 0.5 Vac to 125 Vac	0.1 A to 5.0 A @ 0.5 Vdc to 28 Vdc; 0.1 A to 5.0 A @ 0.5 Vac to 115 Vac
Measurements	various	various	49,78 mm H x 14,61 mm W x 14,61 mm D [1.96 in H x 0.575 in W x 0.575 in D]
Approvals	qualified to MIL-PRF-8805/26/98	UL, CSA, CE	UL, qualified to MIL-DTL-83781
Features	choice of sealed bushing; short behind panel depth	optional step-case design provides added space between terminals to prevent shorting	saves space and weight; sealed bushing versions



Series	AML
Housing type	non-lighted, rectangle; 1 lamp circuit, rectangle; 2 lamp circuits, rectangle
Circuitry	SPST, SPDT, DPST, DPST, 4PDT
Action	2 position, 3 position
Mounting	snap-in panel
Termination	solder, quick connect, printed circuit, push-on
Ampere/voltage range	0.4 A to 2 A @ 0.5 Vdc to 30 Vdc; 0.4 A to 3 A @ 0.5 Vac to 125 Vac; 0.4 A to 2 A @ 0.5 Vac to 250 Vac
Light (if applicable)	no lamp installed; incandescent 6 V, 14 V, 28 V; neon
LED/neon color	red, yellow, green
Measurements	various
Approvals	–
Features	silver and gold contacts; available with or without diode protection for LEDs; lamp circuit independent of switch circuit





ET	MT	NT	TL	
magnetically held toggle	miniature toggle	commercial-grade toggle	military-grade toggle	Type
most listings qualified to MIL-S-5594	IEC 60529-2001, IP67, IP68	IP67/68; NEMA 3, 3R, 4 and 13	qualified to MIL-DTL-3950	Sealing
-65°C to 71°C [-85°F to 160°F]	-40°C to 85°C [-40°F to 185°F]	-40°C to 71°C [-40°F to 160°F]	-65°C to 71°C [-85°F to 160°F]	Operating temp.
standard, pull/push-to-unlock, tab	standard	standard, locking, special design, tab	standard, special design, tab, paddle, none	Actuator/lever
2- or 3-position, momentary & maintained	2- or 3-position, momentary & maintained	2- or 3-position, momentary & maintained	2- or 3-position, momentary & maintained	Action
bushing 15/32 in	bushing 15/32 in	bushing 15/32 in	bushing 15/32 in	Mounting
screw, leadwire, turret	solder	solder, screw, quick connect	IWTS, solder, screw, quick connect, leadwire	Termination
SPDT, DPDT, 4PDT	SPST, SPDT, DPST, DPDT	SPST, SPDT, DPST, DPDT, 4PST, 4PDT	SPST, SPDT, DPST, DPDT, 3PST, 3PDT, 4PST, 4PDT	Circuitry
fine silver	silver, gold-plated	silver alloy, gold-plated	silver alloy, gold-plated	Contacts
7 A max. (resistive)	5 A, 28 Vdc (silver contacts) 100 mA, 28 Vdc (gold-plated contacts)	up to 20 A (resistive)	up to 20 A (resistive)	Amp rating
51,56 mm H x 25,4 mm W x 25,4 mm D [2.03 in H x 1.0 in W x 1.0 in D]	43,1 mm H x 19,05 mm W x 14,55 mm D [1.697 in H x 0.75 in W x 0.573 in D]	58,4 mm H x 33,5 mm W x 22,6 mm D [2.3 in H x 1.32 in W x 0.89 in D]	58,4 mm H x 33,5 mm W x 22,6 mm D [2.3 in H x 1.32 in W x 0.89 in D]	Measurements
qualified to MIL-S-5594	UL, CE	UL, CSA, CE	UL, CSA, CE, qualified to MIL-DTL-3950	Approvals
holding coil replaces mechanical holding mechanisms to maintain toggle in operate	high seal rating to protect from water ingress, 60k life cycle offers enhanced application life	completely sealed switching chamber; enhanced tactile feedback	environment-proof sealing; qualified to MIL-DTL-3950	Features



TP
non-lighted, rectangle
SPST, SPDT, DPDT, 4PDT
2 position, 3 position
flush mount; above panel mount
screw
silver alloy
-
-
various
UL recognized, CSA certified, CE approved
2- or- 3-position operating action; various button colors; dust and splash-proof sealed; silver or gold contacts available; can be provided with or without buttons

Warranty/Remedy

Honeywell warrants goods of its manufacture as being free of defective materials and faulty workmanship during the applicable warranty period. Honeywell's standard product warranty applies unless agreed to otherwise by Honeywell in writing; please refer to your order acknowledgment or consult your local sales office for specific warranty details. If warranted goods are returned to Honeywell during the period of coverage, Honeywell will repair or replace, at its option, without charge those items that Honeywell, in its sole discretion, finds defective. **The foregoing is buyer's sole remedy and is in lieu of all other warranties, expressed or implied, including those of merchantability and fitness for a particular purpose. In no event shall Honeywell be liable for consequential, special, or indirect damages.**

While Honeywell may provide application assistance personally, through our literature and the Honeywell web site, it is buyer's sole responsibility to determine the suitability of the product in the application.

Specifications may change without notice. The information we supply is believed to be accurate and reliable as of this writing. However, Honeywell assumes no responsibility for its use.

For more information

Honeywell Sensing and Internet of Things services its customers through a worldwide network of sales offices and distributors. For application assistance, current specifications, pricing or the nearest Authorized Distributor, visit sensing.honeywell.com or call:

Asia Pacific	+65 6355-2828
Europe	+44 1698 481481
USA/Canada	+1-800-537-6945

Honeywell Sensing and Internet of Things

9680 Old Bailes Road
Fort Mill, SC 29707
www.honeywell.com