

MICRO SWITCH™

Rocker Switches Line Guide



Miniature switches. Maximum value. Honeywell Sensing and Control (S&C) offers an unprecedented lineup of full-size, miniature, and subminiature rocker switches. But an impressive product line is only one part. We bring to bear engineering expertise and application knowledge no other company can offer.

That means we deliver switches with a variety of aesthetic and functional options: various circuit configurations, ac and dc ratings, industry-standard dimensions, and snap-in mountings. Additionally, we offer one-or-two-pole switches in numerous single throw and double throw maintained and momentary circuits. That's why we're unparalleled as the gold standard and unquestioned as your best value.

FEATURES

SEALED FULL-SIZED ROCKER SWITCHES

FR Series.

Features: Expected electrical life 50,000 cycles momentary; 100,000 cycles maintained • Expected mechanical life 250,000 cycles minimum • Seamless base construction with “tri-seal” design—sealing ensured around actuator stem, lamp, and base • Sealed to IP67 • One- or two-pole circuitry options • Designed to withstand operating temperature -40 °C to 85 °C [-40 °F to 185 °F] • Welded lamp connection and one-piece internal, jumperless terminal withstand extreme shock and vibration • Twelve terminals offer an extensive range of switch and lamp circuit options, including LED or incandescent illumination • Vibration and shock resistant

Benefits: Offers enhanced design flexibility and sets new standards for both performance and reliability. The switches are designed to fit industry standard mounting holes of 44,0 mm x 22,0 mm [1.734 in x 0.867 in] and offer a variety of switch and lamp circuit combinations. Potential applications include transportation industry, over-the-highway, agricultural equipment, construction

equipment, test equipment, heavy-duty machinery, and marine equipment.

SR Series.

Features: Expected electrical life 50,000 cycles momentary; 100,000 cycles maintained • Expected mechanical life 150,000 cycles minimum • Seamless base construction with “tri-seal” design—sealing ensured around actuator stem, lamp, and base • Dual switch seal certified to IP66/IP68 • UL recognized, CSA certified • Optional panel seal—prevents water/dust ingress behind panel • Offered in both eight and ten terminal base options • AMP and Packard compatible connectors available • Designed to withstand operating temperatures from -40 °C to 85 °C [-40 °F to 185 °F] • Optional rocker boot available for non-illuminated SRN Series

Benefits: Robust performance in a flexible package. SRL Series can be illuminated with square- or bar-shaped lenses. Potential applications include transportation industry, over-the-highway, agricultural equipment, construction equipment, test equipment, heavy-duty machinery, and marine equipment.

MINIATURE ROCKER SWITCHES

MR Series.

Features: Five lamp circuits, including dependent, independent, and unballasted

- Logic level rated to 16 A, 125 Vac
- Expected electrical life 50,000 cycles
- Expected mechanical life 100,000 cycles
- UL recognized, CSA certified • Choice of actuator colors • One- or two-pole circuitry options • Operating temperature 0 °C to 85 °C [32 °F to 185 °F] • LED and neon lamp illumination options

Benefits: Variety of aesthetic and functional options ranging from circuit configurations to ac and dc ratings. Industry-standard dimensions. Easy snap-in mounting method. One- or two-pole switches in numerous single throw and double throw maintained and momentary circuits. Potential applications include small appliances, coffee makers, portable heaters, popcorn machines, transportation industry, and general purpose.

MICRO SWITCH™ Rocker Switches Line Guide

Take Action...

...to turn something on or off, sound an alarm, initiate a new procedure or just about anything else you can dream up. Honeywell S&C rocker switches meet the needs of a wide variety of industries — including yours.

The **FR Series** illuminated and non-illuminated full size sealed rocker switches offer enhanced design flexibility and set new standards for both performance and reliability. They meet the transportation industry's critical requirements (environmental, electrical, mechanical, shock/vibration).

The **SR Series** illuminated and non-illuminated full size sealed rocker switches offer robust performance in a flexible package. These switches have an optional panel seal and the SRL Series can be illuminated with square-or-bar-shaped lenses. Like the FR Series, the SR meets the transportation industry's critical requirements.

The **MR Series** illuminated and non-illuminated miniature switches have high in-rush current handling capabilities (100 A peak).

The **MRS Series** non-illuminated subminiature switches' new wing design combines low insertion force with superior panel retention. It's also available with a number of finishes.



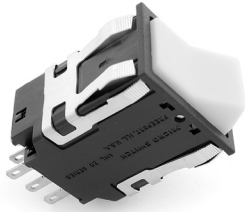
Sealed, Full-Sized Rocker Switches

	FR Series	SR Series
Housing type	non-lighted, rectangle 2 lamp circuits, rectangle	non-lighted, rectangle 1 lamp circuit, rectangle 2 lamp circuits, rectangle
Circuitry	SPDT, DPDT	SPDT, DPDT
Action	3 position	3 position
Mounting	snap-in panel	snap-in panel
Termination	quick connect	quick connect
Ampere/voltage range	20 A, 12 V (resistive)	10 A at 250 Vac; 15 A at 125 Vac
Light (if applicable)	12 V LED	12 V LED
LED/neon color	green/green, green/amber	red, red/red, green/amber, green/green



Miniature/Subminiature Rocker Switches

	MR Series	MRS Series
Housing type	non-lighted, rectangle 1 lamp circuit, rectangle	non-lighted, rectangle
Circuitry	SPDT, DPDT	SPDT
Action	2 position	3 position
Mounting	snap-in panel	snap-in panel
Termination	quick connect	quick connect
Ampere/voltage range	8 A at 250 Vac; 12 A at 125 Vac 12 A, 6 V; 12 A, 24 V	12 A at 125 Vac, 6 A at 250 Vac
Contacts	silver alloy	snap action
Light (if applicable)	6 V LED, 24 V LED, unballasted LED	—
LED/neon color	clear red, clear green, clear amber	—



Power-duty Rocker Switches

AML Series

Housing type	non-lighted, rectangle 1 lamp circuit, rectangle 2 lamp circuits, rectangle
Circuitry	SPST, SPDT, DPST, DPST, 4PDT
Action	2 position, 3 position
Mounting	snap-in panel
Termination	solder, quick connect, printed circuit, push-on
Contacts	silver, gold
Light (if applicable)	incandescent (no lamp installed); incandescent 6 V, 14 V, 28 V; neon
LED/neon color	red, yellow, green

SUBMINIATURE ROCKER SWITCHES

MRS Series.

Features: Cost-effective design with smooth matte finish • All circuits available with 0.187 in tabs • Expected electrical life 50,000 cycles momentary; 100,000 cycles maintained • Expected mechanical life 100,000 cycles • UL recognized, CSA certified • One-pole circuitry • Operating temperature 0 °C to 85 °C [32 °F to 185 °F]

Benefits: Often ideal where there is restricted space behind the panel. Easy snap-in mounting method. Snap-action contacts provide the user with a crisp, positive response. Functional options ranging from circuit configurations to ac and dc ratings. Industry-standard dimensions. Potential applications include appliance industry, office lighting, RV industry, hand-held vacuums, business machines, small appliances, washing machines, power supplies, audio-visual, and telecom.

POWER-DUTY ROCKER SWITCHES

AML Series.

Features: 2- or 3-position operating action • Available with one or two lamps or nonlighted displays • Housings have black paddles and bezels • Lighted or non-lighted covers for switch housings • Terminals are 0.110 in by 0.020 in, or 0.025 in by 0.025 in • Silver or gold contacts • Available with or without diode protection for LEDs • Lamp circuit independent of switch circuit • Toggle type rocker operators permanently installed in rectangular housings • Lamps furnished installed or ordered separately

Benefits: AML features innovations designed by industrial designers to achieve the best balance of human factors and aesthetic appearance. Operator height, bezel size, and the compatibility of rectangular shapes blend with other components to harmonize the panel. Potential applications include industrial machinery and equipment, commercial aviation, construction equipment, test instruments, agricultural machinery, process control, and medical instrumentation

Warranty. Honeywell warrants goods of its manufacture as being free of defective materials and faulty workmanship. Honeywell's standard product warranty applies unless agreed to otherwise by Honeywell in writing; please refer to your order acknowledgement or consult your local sales office for specific warranty details. If warranted goods are returned to Honeywell during the period of coverage, Honeywell will repair or replace, at its option, without charge those items it finds defective. **The foregoing is buyer's sole remedy and is in lieu of all warranties, expressed or implied, including those of merchantability and fitness for a particular purpose. In no event shall Honeywell be liable for consequential, special, or indirect damages.**

While we provide application assistance personally, through our literature and the Honeywell web site, it is up to the customer to determine the suitability of the product in the application.

Specifications may change without notice. The information we supply is believed to be accurate and reliable as of this printing. However, we assume no responsibility for its use.

For more information about Sensing and Control products, visit www.honeywell.com/sensing or call +1-815-235-6847
Email inquiries to info.sc@honeywell.com

WARNING **PERSONAL INJURY**

- DO NOT USE these products as safety or emergency stop devices or in any other application where failure of the product could result in personal injury.

Failure to comply with these instructions could result in death or serious injury.

WARNING **MISUSE OF DOCUMENTATION**

- The information presented in this catalogue is for reference only. DO NOT USE this document as product installation information.
- Complete installation, operation and maintenance information is provided in the instructions supplied with each product.

Failure to comply with these instructions could result in death or serious injury.

Sensing and Control
Automation and Control Solutions
Honeywell
1985 Douglas Drive North
Golden Valley, MN 55422 USA
+1-815-235-6847
www.honeywell.com/sensing

005425-1-EN IL50 GLO
July 2008
Copyright © 2008 Honeywell International Inc. All rights reserved.

Honeywell